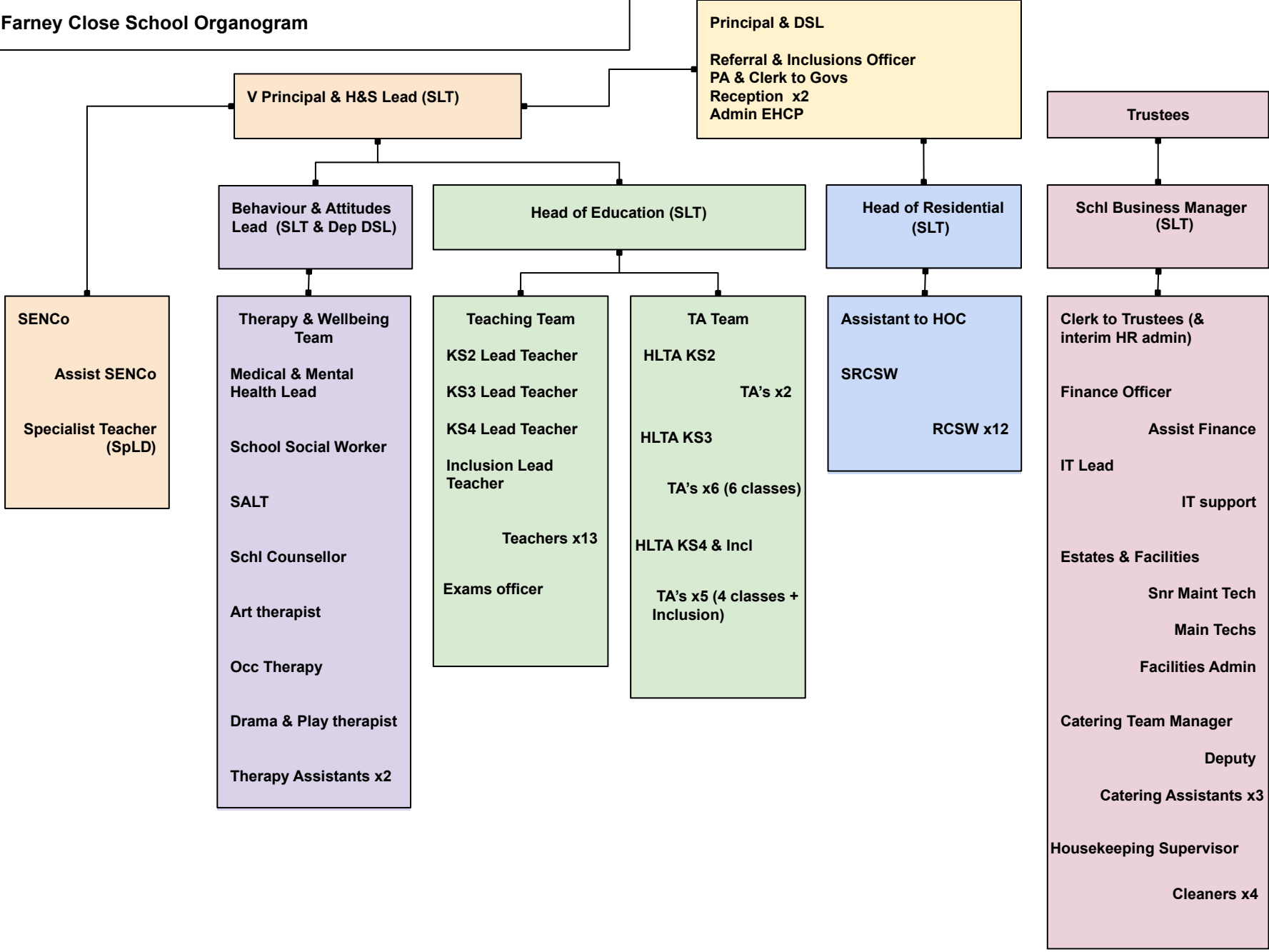


Farney Close School Organogram



Principal & DSL
Referral & Inclusions Officer
PA & Clerk to Govs
Reception x2
Admin EHCP

V Principal & H&S Lead (SLT)

Trustees

Behaviour & Attitudes Lead (SLT & Dep DSL)

Head of Education (SLT)

Head of Residential (SLT)

Schl Business Manager (SLT)

SENCo
Assist SENCo
Specialist Teacher (SpLD)

Therapy & Wellbeing Team
Medical & Mental Health Lead
School Social Worker
SALT
Schl Counsellor
Art therapist
Occ Therapy
Drama & Play therapist
Therapy Assistants x2

Teaching Team
KS2 Lead Teacher
KS3 Lead Teacher
KS4 Lead Teacher
Inclusion Lead Teacher
Teachers x13
Exams officer

TA Team
HLTA KS2
TA's x2
HLTA KS3
TA's x6 (6 classes)
HLTA KS4 & Incl
TA's x5 (4 classes + Inclusion)

Assistant to HOC
SRCSW
RCSW x12

Clerk to Trustees (& interim HR admin)
Finance Officer
Assist Finance
IT Lead
IT support
Estates & Facilities
Snr Maint Tech
Main Techs
Facilities Admin
Catering Team Manager
Deputy
Catering Assistants x3
Housekeeping Supervisor
Cleaners x4